

Welcome to the West Area Planning Committee

- This planning committee meeting is held in public but it is not a public meeting.
- There will be an opportunity for the public to address the committee on each application.
- If you wish to speak for or against a planning application, you need to have either requested it in advance, or hand in one of the available speaker forms, or speak to the clerk.
- Information on meeting protocol and conduct at the committee is set out in the Code of Practice.
- This is in the committee agenda just before the first planning application report.



The junction of Manor Place and Manor Road, looking up Manor Place



The southern end of Manor place as it is now. The new access would be created by extending the road into the site and removing some of the vegetation either side



View north along Manor Place towards college buildings in Manor Road. Gives some idea of how the proposed scheme might provide an 'endpoint' in the view when looking the other way



www.oxford.gov.uk



View south-east across the site from the eastern Cemetery wall, towards the Squash Courts. Wall newly repaired.



6



View eastwards from the main pathway in the cemetery. The avenue of conifers on the left will partly obscure views of Block A. Open views over the refectory through the landscaped area of the scheme will maintain view through to trees beyond.



The historic Cemetery wall. Block A of the new development will be visible beyond.



www.oxford.gov.uk



**OXFORD
CITY
COUNCIL**



View from the eastern cemetery wall, looking east towards the tree planting next to 13 Manor Place. Block A would be located here.



View from the garden of 13 Manor Place in the autumn



13



View from the garden of 13 Manor Place



14



View north across the Deer Park towards the proposed development. Views largely hidden behind mature trees, though glimpsed views will be possible, especially in winter



15



View west showing the high listed wall to the Deer Park and Magdalen College (site sits behind the cars parked to the right)



www.oxford.gov.uk



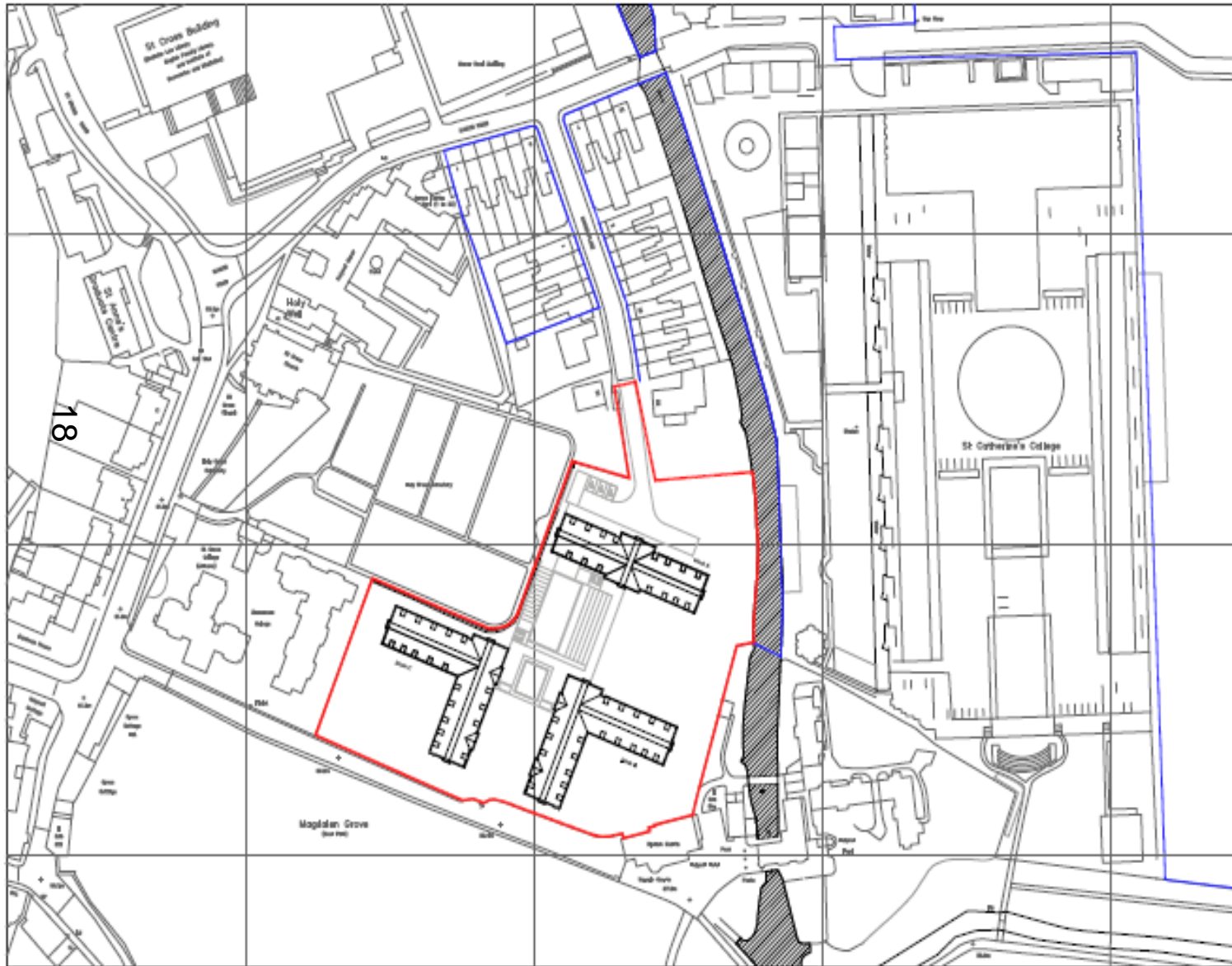
The view west from outside St Catherine's College, across towards Manor Place and the development site. Part of the Grade I listed college grounds, designed by Arne Jacobsen



17



Superseded Site Plan



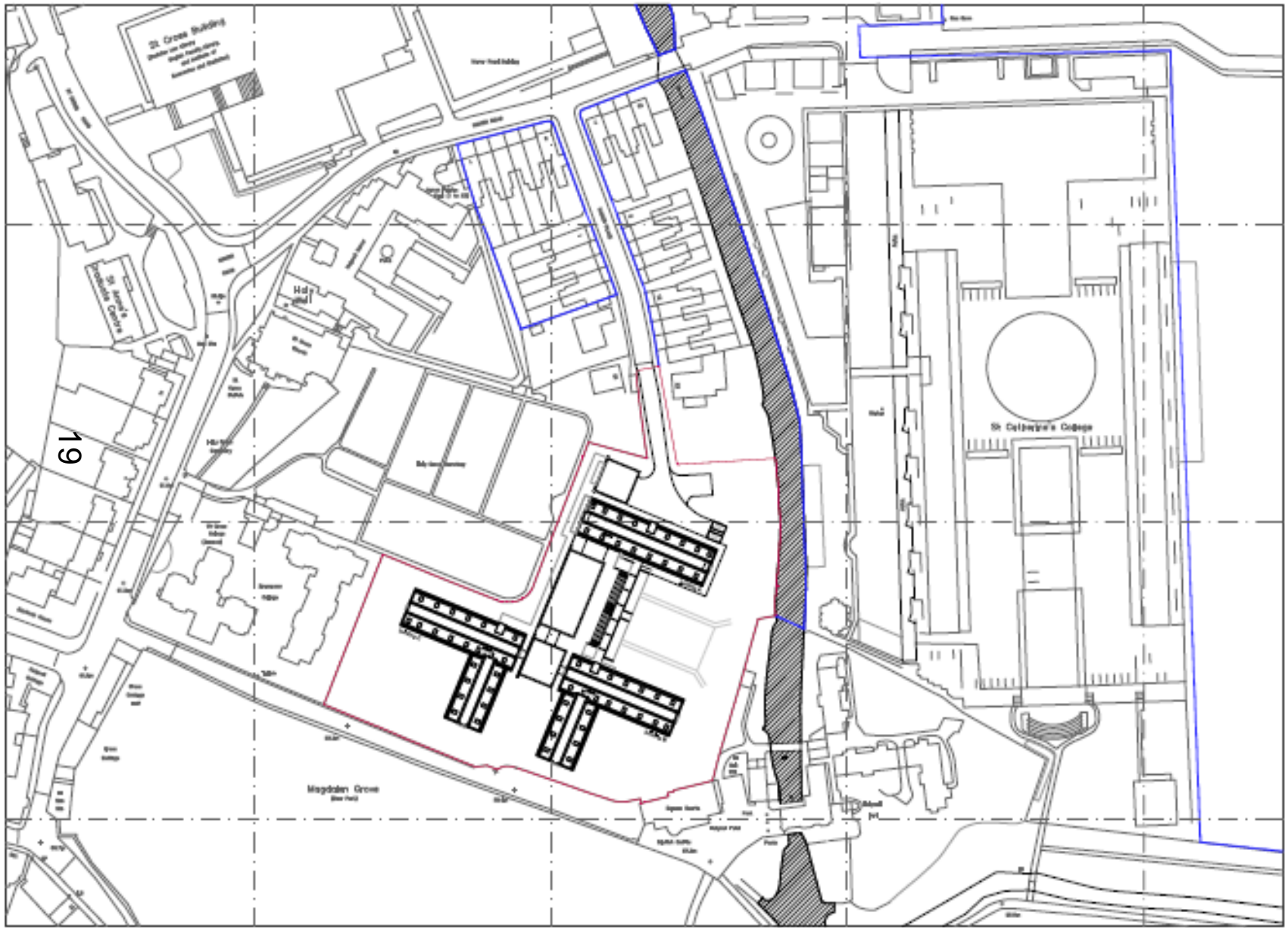
www.oxford.gov.uk



Proposed Site Plan



ORD
TY
NCIL



19

Landscape Framework Plan

20



www.oxford.gov.uk



Proposed Elevations

.gov.uk



ELEVATION A1- Looking south from main site entrance

21



Proposed Elevations

v.uk



ELEVATION A3 - Looking south from Holywell Lane

22



ELEVATION A4 - Looking west towards the cemetery



Proposed Section



SECTION-ELEVATION B1

23



SECTION-ELEVATION B2

www.oxford.gov.uk



Proposed Section



SECTION-ELEVATION B3 (staggered)

24



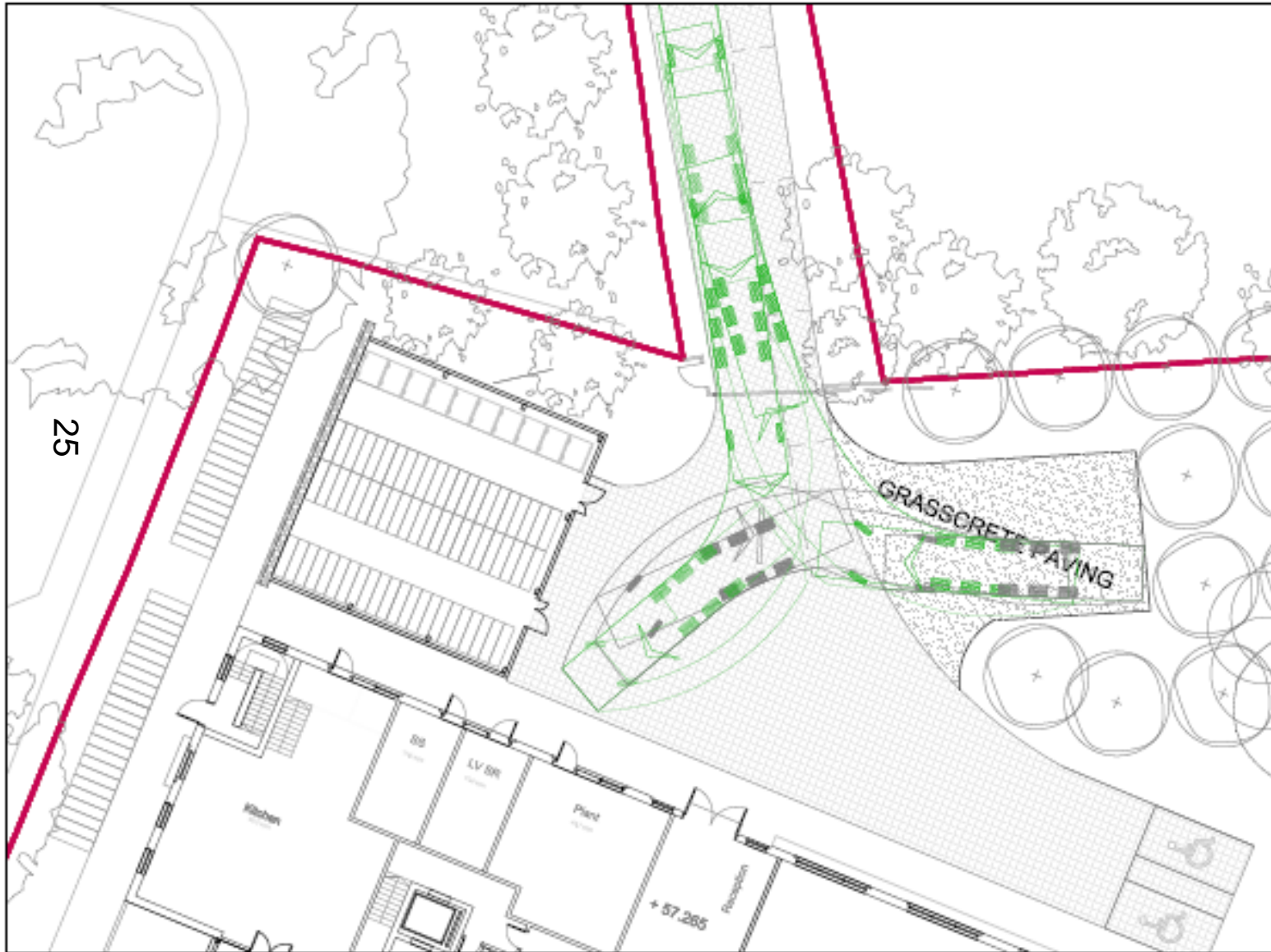
SECTION-ELEVATION B4

www.oxford.gov.uk



Swept Path Analysis

v.uk



This page is intentionally left blank